



EOTech

EOTech
transform your arsenal.

2014



transform *your* arsenal.

You know us as the *only* holographic weapon sight in the world.

Now, we're continuing that level of excellence in
lasers, night vision and thermal imaging.

So whether you're in the military, law enforcement or simply
enjoy hunting, no one can give you an advantage this powerful.

Welcome to EOTech 2014.



table of contents

| | |
|-------------------------------|----|
| Table of Contents | 01 |
| New Products | 02 |
| HWS Intro | 03 |
| EXPS3 | 04 |
| 553 | 05 |
| 556 | 05 |
| XPS3 | 06 |
| 552 | 06 |
| 552.LBC | 06 |
| LBC2 | 06 |
| EXPS2 | 07 |
| 300 BLK | 07 |
| XPS2 | 07 |
| 516 | 08 |
| 517 | 08 |
| 512 | 09 |
| 512.LBC | 09 |
| LBC | 09 |
| 512 XBOW | 09 |
| Zombie II | 10 |
| Zombie I | 10 |
| XPS2-RF | 10 |
| Holographic Hybrid Sight I | 11 |
| Holographic Hybrid Sight II | 11 |
| G33 | 11 |
| MRDS | 12 |
| MRDS Shotgun Mount | 12 |
| General Specifications | 13 |
| Ballistic Reticle Info | 13 |
| Lights & Lasers | 14 |
| IFL 250 | 14 |
| ATPIAL | 15 |
| Night Vision / Thermal | 16 |
| WTM | 17 |
| MTM | 17 |
| LWTS | 17 |
| X320 Thermal Imager | 18 |
| M914 | 20 |
| M2124 / M2124LR | 20 |



NEW
OF
2014



X320 Thermal Imager



Model 512.LBC

2014 NEW PRODUCTS



MODEL 512LBC™ LASER BATTERY CAP

The ever popular EOTech 512 now brings speed to light. The new Model 512.LBC with its fast target acquisition, reliability and durability, now features an integrated aiming laser for improved aiming capability. Its low-power visible laser is ideal for home defense or training situations. An integrated accessory port allows for the use of a remote pressure switch (sold separately). *see page 9*



MODEL 552LBC2™ LASER BATTERY CAP

The battle-proven Model 552 has been the sight of choice by military units like Stryker Brigade, 10th Mountain and 3rd Infantry for many years. As a trusted optic that can withstand great punishment, the 552 has just gotten better. Introducing the new 552.LBC2 with integrated low- power visible and IR lasers. It is the same rugged optic with upgraded laser features, making it the perfect Close Quarter Battle (CQB) optic for military and law enforcement personnel. An integrated accessory port allows for the use of a remote pressure switch (sold separately). *see page 6*

LBC™ LASER BATTERY CAP

Looking to upgrade your EOTech 512 or 552 with a drop-in, easy-to-use aiming laser? It's now possible with the new Laser Battery Cap (LBC) upgrade accessory that allows you to quickly exchange your existing 512 or 552 battery cap with the new LBC battery cap with integrated low-power visible laser and IR laser combo. *see page 6 or 9*



X320™ THERMAL IMAGER

New for 2014, the X320 delivers advanced thermal imaging technology in a compact, rugged design. The X320 provides an impressive 320 x 240 resolution with a 30 Hz refresh rate and is waterproof and shockproof up to 1 meter. Its ability to detect activity from more than 800 yards makes it perfect for public safety, first responders, security operations and hunting where local laws allow. *see page 18*



What makes an EOTech HWS better than a red dot sight?

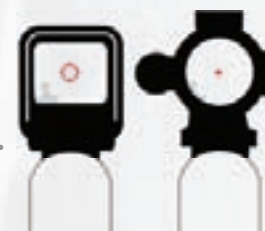
Reticle

- **EOTech**- 65 MOA ring allows for faster target acquisition, while the center dot (1 MOA-smallest in the industry) provides better range precision.
- **Typical Red Dot**- Dot is typically 4 to 8 MOA so the dot is large enough to find. At 200 yards, this size dot covers 8 to 16 inches of the target compared to 2 inches for the HWS.



Parallax-Free

- **EOTech**- By using flat glass the HWS is parallax-free across the entire viewing window. The user's eye does not need to be centered in the window of the sight for it to maintain accuracy. Point of aim and point of impact are maintained regardless of the operator's head position.
- **Typical Red Dot**- Using concave glass, typical red dots are only parallax-free in the center of the viewing window. Parallax error, or dot shift, occurs if the shooter acquires a target in all other areas of the window.



Field-Of-View

- **EOTech**- The rectangular heads-up display provides a wider field-of-view (FOV) over rounded windows.
- **Typical Red Dot**- Rounded windows provide less FOV with their tubular construction creating both blind spots and constricted vision or "tunnel effects" when the red dot is rotated or off axis.

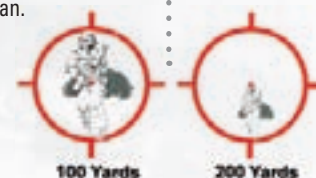


Use with Magnification

- **EOTech**- The 1 MOA aiming dot does not expand when viewed with magnification. In tandem with a 3X magnifier, the dot maintains its 1 MOA size while the target is enlarged 3 times, offering much greater precision.
- **Typical Red Dot**- When an LED dot is viewed through a 3X magnifier, the dot grows by the same factor as the target. Although the shooter will see the target 3X larger, the dot will cover the same target area, providing no additional precision.

Range estimation with unmagnified HWS

- Range estimation can be done using the ring of the reticle. Example: at 100 yards the inside circle is equal to a 5' 5" human.



Other Advantages

- Common batteries (AA, CR123)
- Programmable auto shut-off
- Low battery indicator
- More brightness settings
- Integrated base; no rings or mounts to purchase
- Made in the USA



HWS® GENERAL SPECIFICATIONS

OPERATION

Optics: Holography – parallax-free
Magnification: 1X
Eye Relief: Unlimited
Operating Temperature:
 -40 °F to 140 °F (-40 °C to 60 °C)
Sealing: Internally fog-proofed optics
Adjustment (per click):
 0.5 MOA (1/2" at 100 yds)
Adjustment Range: +/- 40 MOA travel

HEADS-UP DISPLAY WINDOW

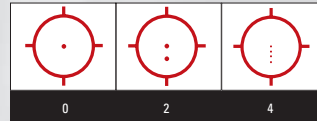
Optical Surfaces: Anti-reflective coating
Window Dimensions:
 1.20" x 0.85" (30 x 23 mm)
Front Window Material: 1/8" solid glass
Rear Window Material: Shatter-resistant laminate (3/16" thick)
Field of View (100 yds): 30 yds (28 m) at a 4" eye relief
Standard Reticle: 65 MOA circle with quadrant ticks with 1 MOA aiming dot

ELECTRICAL

Brightness Adjustment Range: Normal Mode 146,000:1 over 20 settings. For models with night vision mode, a total range of greater than 30,000,000:1
Brightness Settings: 20 settings with scrolling feature (optional 10 settings for night vision use)
Auto Battery Check Indicator: Flashing reticle upon start-up when battery is low
Auto Shutdown: User-controlled at either 4 hrs or 8 hrs

MODEL EXPS3™

Choice of 3 Reticles



See page 13 for info.

The EXPS3 is an excellent choice not only for hunters, but for professionals such as the U.S. Special Operations Command (USSOCOM), which has standardized on the HWS as its weapon optic for close quarter situations.

The EXPS3 offers true two eyes open shooting for fast target acquisition, as well as a 7 mm raised base for iron sight access and night vision capability. It also has side buttons and an adjustable, locking, quick-detach lever for easy installation.



The HWS Model EXPS is controlled under the Export Administration Regulations (EAR), and may not be exported without proper authorization by the U.S. Department of Commerce.

| Product | Order Code | L x W x H | Weight | Waterproof | Color/ Finish | Mount | Return to Zero | Brightness | Power Source | Battery Life | Reticle Options |
|---------|---|---|--------------------|---------------------|---------------|--|---|-----------------------------|-------------------------|--|--|
| EXPS3 | EXPS3-0 EXPS3-2 EXPS3-4 EXPS3-0 Tan EXPS3-2 Tan | 3.5" x 2.2" x 2.8" (91.4 x 55.8 x 71.8 mm) | 11.2 oz (317 g) | to 33 ft. (10 m) | black, tan | Quick-detach lever fits both 1" Weaver and MIL-STD-1913 rail | Repeatable to within 1 MOA after remounting | 30 day settings (10 for NV) | 1 x 123 lithium battery | 600 continuous hours at nominal setting 12 | 65 MOA ring with single 1 MOA dot, 65 MOA ring with (2) 1 MOA dots, or 65 MOA ring with (4) 1 MOA dots |

MODEL 553™

Built to withstand harsh conditions, the 553 delivers precise accuracy with state-of-the-art holographic sight technology and extreme durability in even the harshest conditions. This night vision-compatible sight offers quick-detach levers and waterproof capability up to 66 ft.

(Note: Certain commercial variants of the MIL-STD-1913 rail specification may not be compatible with the Model 553 mounting assembly.)

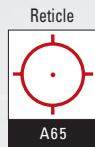


See page 13 for info.



MODEL 556™

The EOTech 556 is the ideal all-purpose optic for most applications, especially when partnered with an EOTech magnifier. The 556 night vision-compatible HWS operates on the same CR123 lithium batteries commonly utilized by the leading gear manufacturers. When it matters most, the combination of speed, versatility and extended battery life makes this sight worthy of your arsenal.



See page 13 for info.

The HWS Model 553 & 556 are controlled under the International Traffic in Arms Regulations (ITAR) and may not be exported without proper authorization by the U.S. Department of State.

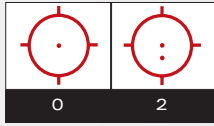
| Product | Order Code | L x W x H | Weight | Waterproof | Color/ Finish | Mount | Return to Zero | Brightness | Power Source | Battery Life | Reticle Options |
|---------|--------------------------|--|--------------------|---------------------|---------------|--|---|----------------------------|-------------------------|---|------------------------------------|
| 553 | 553.A65BLK or 553.A65TAN | 4.9" x 2.2" x 2.8" (124 x 55.8 x 71 mm) | 12.3 oz (349 g) | to 66 ft. (20 m) | black, tan | Quick-detach levers Picatinny MIL-STD-1913 | Repeatable to within 1 MOA after remounting | 30 settings (10 for NV) | 2 x 123 lithium battery | 1,100 continuous hours at nominal setting 12 | 65 MOA ring w/ single 1 MOA dot |
| 556 | 556.A65 | 5.0" x 2.4" x 2.8" (126 x 60.9 x 71 mm) | 11.9 oz (372 g) | to 33 ft. (10 m) | black | MIL-STD-1913 rail | Repeatable to within 1 MOA after remounting | 30 settings (10 for NV) | 2 x 123 lithium battery | 1,100 continuous hrs at nominal setting 12 | 65 MOA ring w/ single 1 MOA dot |

holographic weapon sights - night vision-compatible

MODEL XPS3™

The shortest and lightest HWS night vision-compatible sight yet. With a single 123 lithium battery configuration, the XPS provides additional rail space, leaving more room for rear iron sights, magnifiers or night-vision mount. Also, offering waterproof capability up to 33 ft., the XPS3 is a great compact option for your platform.

Choice of 2 Reticles



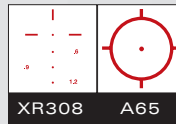
See page 13 for info.



MODEL 552™

Standardized by the DEA, ATF, and FBI HRT, the Model 552 offers night vision-compatibility. The AA battery model is the sight of choice by military units like Stryker Brigade, 10th Mountain and 3rd Infantry. It is battle-proven to withstand the abuse that any harsh environment, high-powered weapon platform or military mission can dish out.

Choice of 2 Reticles



See page 13 for info.



MODEL 552™ LASER BATTERY CAP

NEW FOR 2014

The battle-proven Model 552 has been the sight of choice by military units like Stryker Brigade, 10th Mountain and 3rd Infantry for many years. As a trusted optic that can withstand great punishment, the 552 has just gotten better. Introducing the new 552.LBC2 with integrated low-power visible and IR lasers. It is the same rugged optic with upgraded laser features, making it the perfect Close Quarters Battle (CQB) optic for military and law enforcement personnel. An integrated accessory port allows for the use of a remote pressure switch (sold separately).



Available as upgrade accessory



The HWS Model XPS3 & 552 are controlled under the Export Administration Regulations (EAR) ECCN 0A987 and may not be exported without proper authorization by the U.S. Department of State.

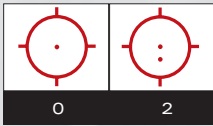
| Product | Order Code | L x W x H | Weight | Waterproof | Color/ Finish | Mount | Return to Zero | Brightness | Power Source | Battery Life | Reticle Options |
|----------|----------------------|---|--------------------|---------------------|---------------|--------------------------------|---|-------------------------|---|---|---|
| XPS3 | XPS3-0 XPS3-2 | 3.5" x 2" x 2.4" (91.4 x 50.8 x 60.9 mm) | 8.0 oz (227 g) | to 33 ft. (10 m) | black | 1" Weaver or MIL-STD-1913 rail | Repeatable to within 1 MOA after remounting | 30 settings (10 for NV) | 1 x 123 lithium battery | 600 continuous hrs at nominal setting 12 | 65 MOA ring w/ single 1 MOA dot, (2) 1 MOA dots & 65 MOA ring |
| 552 | 552.A65 552.XR308 | 5.4" x 2" x 2.25" (137 x 50.8 x 57 mm) | 10.9 oz (310 g) | to 33 ft. (10 m) | black | 1" Weaver or MIL-STD-1913 rail | Repeatable to within 1 MOA after remounting | 30 settings (10 for NV) | 2 x AA battery (supports lithium, alkaline or rechargeable) | 1,000 continuous hrs (lithium) at nominal setting 12; 600 continuous with AA alkaline | XR500, XR308, 65 MOA ring w/ single 1 MOA aiming dot |
| 552.LBC2 | 552.LBC2 | 5.4" x 3.27" x 2.25" (137 x 83 x 57 mm) | 13.4 oz (382 g) | to 33 ft. (10 m) | black | 1" Weaver or MIL-STD-1913 rail | 1 MOA after remounting | 30 settings (10 for NV) | 2 x AA battery (supports lithium, alkaline) | 24 (alkaline) or 36 (lithium) continuous hrs at nominal setting 12 - both lasers on | 65 MOA ring w/ single 1 MOA aiming dot |
| LBC2 | LBC2 | 2.7" x 3.2" x .96" (68.5 x 81.2 x 24.3 mm) | 4.9 oz (140 g) | to 33 ft. (10 m) | black | NA | NA | NA | 2 x AA battery (supports lithium, alkaline) | 24 (alkaline) or 36 (lithium) continuous hrs at nominal setting 12 - both lasers on | NA |

holographic weapon sights - night vision-compatible

MODEL EXPS2™

Maximize rail space without sacrificing runtime. The Model EXPS2 allows for co-witnessing of iron sights and convenient side buttons to add a magnifier. It features an adjustable, locking, quick-detach lever for easy attachment and removal.

Choice of 2 Reticles



See page 13 for info.



MODEL 300™ BLK

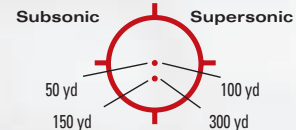
Reticles



See page 13 for info.

Designed with tactical shooters in mind, the XPS2-300 offers a 2-dot ballistic drop reticle that allows the shooter to zero either subsonic or supersonic .300 Blackout rounds in the same reticle pattern. Offered in the XPS2 platform, it is the shortest and lightest HWS sight available. Featuring a .300 BLK custom laser etching on the hood and waterproof capability up to 10 ft., functionality and durability are at the forefront.

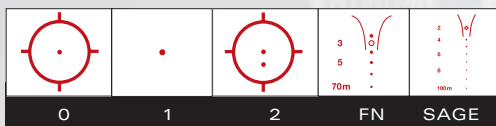
.300 BLK



MODEL XPS2™

The shortest and lightest HWS sight yet. With a single 123 lithium battery configuration, the XPS provides additional rail space, leaving more room for rear iron sights or magnifiers. Also offering waterproof capability up to 10 ft., the XPS2 is a great compact option for your platform.

Choice of 5 Reticles



XPS2-0 XPS2-1 XPS2-2 XPS2-FN XPS2-SAGE

See page 13 for info.



The HWS Model XPS & EXPS are controlled under the Export Administration Regulations (EAR) and may not be exported without proper authorization by the U.S. Department of Commerce.

| Product | Order Code | L x W x H | Weight | Waterproof | Color/Finish | Mount | Return to Zero | Power Source | Battery Life | Reticle Options |
|----------|--|---|--------------------|-----------------|--------------|--|---|-------------------------|--|---|
| EXPS2 | EXPS2-0 EXPS2-2 | 3.5" x 2.2" x 2.8" (91.4 x 55.8 x 71.8 mm) | 11.2 oz (317 g) | to 10 ft. (3 m) | black | Quick-detach lever fits both 1" Weaver & MIL-STD-1913 rail | Repeatable to within 1 MOA after remounting | 1 x 123 lithium battery | 600 continuous hrs at nominal setting 12 | 65 MOA ring with single 1 MOA dot, 65 MOA ring with (2) 1 MOA dots |
| .300 BLK | XPS2-300 | 3.5" x 2" x 2.4" (91.4 x 50.8 x 60.9 mm) | 8 oz (227 g) | to 10 ft. (3 m) | black | 1" Weaver or MIL-STD-1913 rail | Repeatable to within 1 MOA after remounting | 1 x 123 lithium battery | 600 continuous hrs at nominal setting 12 | 65 MOA ring w/ (2) 1 MOA dots |
| XPS2 | XPS2-0 XPS2-1 XPS2-2 XPS2-FN XPS2-SAGE | 3.5" x 2" x 2.4" (91.4 x 50.8 x 60.9 mm) | 8 oz (227 g) | to 10 ft. (3 m) | black | 1" Weaver or MIL-STD-1913 rail | Repeatable to within 1 MOA after remounting | 1 x 123 lithium battery | 600 continuous hrs at nominal setting 12 | 65 MOA ring w/ single 1 MOA dot; Single 1 MOA aiming dot; (2) 1 MOA dots and 65 MOA ring; FN Less Lethal and SAGE Less Lethal |

holographic weapon sights - non-night vision-compatible

MODEL 516™

The EOTech 516 is the ideal all-purpose optic for most applications, especially when partnered with an EOTech magnifier. With side buttons to accommodate a magnifier and submersible to 10 ft., this sight offers flexibility to fit any situation. The Model 516 mounts and removes quickly on a MIL-STD-1913 rail mount with return-to-zero repeatability to 1 MOA.



See page 13 for info.



MODEL 517™

The Model 517 is designed to easily accommodate many firearms operating on cost-effective AA batteries. The Model 517 is both durable and submersible up to 10 ft. and offers side buttons, making this a perfect match for an EOTech magnifier.



See page 13 for info.



The HWS Model 516 and 517 are controlled under the International Traffic in Arms Regulations (ITAR) and may not be exported without proper authorization by the U.S. Department of State.

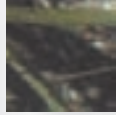
| Product | Order Code | L x W x H | Weight | Waterproof | Color/ Finish | Mount | Return to Zero | Power Source | Battery Life | Reticle Options |
|---------|------------|--|--------------------|-----------------|---------------|-------------------|---|---|---|---------------------------------|
| 516 | 516.A65 | 5.0" x 2.4" x 2.8" (126 x 60.9 x 71 mm) | 11.9 oz (372 g) | to 10 ft. (3 m) | black | MIL-STD-1913 rail | Repeatable to within 1 MOA after remounting | 2 x 123 lithium battery | 1,100 continuous hrs at nominal setting 12 | 65 MOA ring w/ single 1 MOA dot |
| 517 | 517.A65 | 5.6" x 2.4" x 2.8" (143 x 60.9 x 71 mm) | 11.9 oz (372 g) | to 10 ft. (3 m) | black | MIL-STD-1913 rail | Repeatable to within 1 MOA after remounting | 2 x AA battery (supports lithium, alkaline or rechargeable) | 1,000 continuous hrs (lithium) at nominal setting 12; 600 continuous with AA alkaline | 65 MOA ring w/ single 1 MOA dot |

MODEL 512™

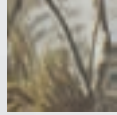
Perfect for anyone who wants fast target acquisition, reliability and durability without night vision capability, the Model 512 is the most popular HWS in the line. Available in black, Realtree APG HD® and Mossy Oak Obsession®



See page 13 for info.



Mossy Oak Obsession®



Realtree APG HD®



Black

MODEL 512™ LASER BATTERY CAP

NEW FOR 2014

The ever popular EOTech 512 now brings speed to light. The new Model 512.LBC with its fast target acquisition, reliability and durability now features an integrated aiming laser for improved aiming capability. Its low-power visible laser is ideal for home defense or training situations. An integrated accessory port allows for the use of a remote pressure switch (sold separately).

Visible Laser

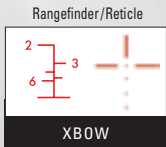


Available as upgrade accessory



CFL-053-4
Available as upgrade accessory

MODEL 512™ XBOW



Rangefinder/Reticle

XBOW

See page 13 for info.



Deer Rangefinder (range at 30 yards)

Designed with Crossbow hunters in mind, the Model 512 Crossbow sight utilizes the unique properties of holography to create optimal range scaling data in a heads-up display. A pre-calculated ranging scale is projected on the target and measures the back to the belly of a mature whitetail deer (18"). Simply position the base of the scale on the belly (see diagram to the left) and read from where the back intersects the scale – it's that easy. With the integral ranging pattern, there is no unnecessary body movement or added noise while in the stand. Both range information and aiming reticle are displayed within the same sight picture to quickly line up your shot.



| Product | Order Code | L x W x H | Weight | Waterproof | Color/ Finish | Mount | Return to Zero | Power Source | Battery Life | Reticle Options |
|-------------|------------|---|--------------------|-----------------|---|-----------------------------------|--|--|---|------------------------------------|
| 512 | 512.A65 | 5.4" x 2" x 2.25" (137 x 50.8 x 57 mm) | 10.9 oz (310 g) | to 10 ft. (3 m) | black, Realtree APG HD®, Mossy Oak Obsession® | 1" Weaver or MIL-STD-1913 rail | Repeatable to within 1 MOA after remounting | 2 x AA battery (supports lithium, alkaline or rechargeable) | 1,000 continuous hrs (lithium) at nominal setting 12, 600 continuous with AA alkaline | 65 MOA ring w/ single 1 MOA dot |
| 512.LBC | 512.LBC | 5.4" x 2.77" x 2.25" (137 x 70 x 57 mm) | 12.6 oz (357 g) | to 10 ft. (3 m) | black | 1" Weaver or MIL-STD-1913 rail | Repeatable to within 1 MOA after remounting | 2 x AA battery (supports lithium, alkaline or rechargeable) | 50 (alkaline) or 60 (lithium) continuous hrs at nominal setting 12 - Laser on | 65 MOA ring w/ single 1 MOA dot |
| LBC | LBC | 2.7" x 2.7" x .96" (68.5 x 68.5 x 24.3 mm) | 4.05 oz (115 g) | to 10 ft. (3 m) | black | NA | NA | 2 x AA battery (supports lithium, alkaline or rechargeable) | 50 (alkaline) or 60 (lithium) continuous hrs at nominal setting 12 - Laser on | NA |
| 512 XBOW | 512.XBOW | 5.4" x 2" x 2.25" (137 x 50.8 x 57 mm) | 10.9 oz (310 g) | to 10 ft. (3 m) | black | 1" Weaver or MIL-STD-1913 rail | Repeatable to within 1 MOA after remounting | 2 x AA battery (supports lithium, alkaline or rechargeable) | 1,000 continuous hrs (lithium) at nominal setting 12, 600 continuous with AA alkaline | X-Bow Reticle with range assist |

holographic weapon sights - non-night vision-compatible



MODEL ZOMBIE II™



See page 13 for info.

The Zombie Stoppers just got better. Zombies around the world have grown to fear the Zombie I. Now under cover, the Zombie II with holographic weapon sight technology comes complete with Reaper Z® camouflage. Renowned for its precision accuracy, extreme durability and the ability to function under harsh conditions, the XPS2-Z2 Zombie Stopper boasts 20 brightness settings. From low- to bright-light situations, these settings deliver target illumination and extreme clarity. The 65 MOA sight-ring reticle, biohazard-shaped tails and a 1 MOA aiming dot serve "Un-deadly" accuracy.

MODEL ZOMBIE I™



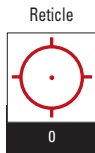
See page 13 for info.

Save Your Brain with the EOTech Zombie Stopper! In these troubled times, it's good to know you can count on EOTech to bring you the ultimate in Zombie-Stopping Holographic Technology. Use the awesome EOTech biohazard reticle to sight them in and kill them dead (again). When threatened by a pack of these brain-eating beasts, fast target acquisition is a must and nothing is faster than EOTech.



MODEL XPS2-RF™

Rimfire Sight



See page 13 for info.

Expanding on an already great product line, EOTech has created a holographic sight specifically for the non-tactical, traditional rimfire or air rifle with 11 mm (3/8") rail. Ideal for small game hunting, high-speed target shooting, and plinking for family or youth, this HWS makes rimfire shooting even more fun. The XPS2-RF is lighter and more streamlined than the traditional HWS and the integrated base mounts to the standard 3/8" dovetail rails on the market.

Fits only 3/8" or 11 mm dovetail lock with no cross bolt (does not work with 1" Weaver or Picatinny rails)



bottom view

The HWS Model XPS is controlled under the Export Administration Regulations (EAR) and may not be exported without proper authorization by the U.S. Department of Commerce.

| Product | Order Code | L x W x H | Weight | Waterproof | Color/ Finish | Mount | Return to Zero | Power Source | Battery Life | Reticle Options |
|-----------|------------|---|-----------------|-----------------|----------------|--------------------------------|---|-------------------------|--|---------------------------------|
| Zombie I | XPS2-Z | 3.5" x 2" x 2.2" (91.4 x 50.8 x 55.8 mm) | 8 oz (227 g) | to 10 ft. (3 m) | black | 1" Weaver or MIL-STD-1913 rail | Repeatable to within 1 MOA after remounting | 1 x 123 lithium battery | 600 continuous hrs at nominal setting 12 | Biohazard |
| Zombie II | XPS2-Z2 | 3.5" x 2" x 2.2" (91.4 x 50.8 x 55.8 mm) | 8 oz (227 g) | to 10 ft. (3 m) | Reaper Z® Camo | 1" Weaver or MIL-STD-1913 rail | Repeatable to within 1 MOA after remounting | 1 x 123 lithium battery | 600 continuous hrs at nominal setting 12 | Biohazard |
| XPS2-RF | XPS2-RF | 3.5" x 2" x 2.2" (91.4 x 50.8 x 55.8 mm) | 7 oz (197 g) | Resistant | black | 3/8" Dovetail | Repeatable to within 1 MOA after remounting | 1 x 123 lithium battery | 600 continuous hrs at nominal setting 12 | 65 MOA ring w/ single 1 MOA dot |

HOLOGRAPHIC HYBRID SIGHT

HHS I™

EXPS3-4 with a G33 Magnifier

The Holographic Hybrid Sight I (HHS I), featuring an EXPS3-4 with a G33 magnifier, provides a solution for engaging threats in close quarters combat situations, quickly transitioning to a 600 m targeting or surveillance situation. Instant transition is achieved through a quick Switch-To-Side (STS) mount that offers a simple, quick disengagement of the magnifier. This durable, night vision-compatible system offers wide field optical performance with superior light transmission for visibility in extreme low-light conditions. Aiming dots may not be distinguishable without magnification.



See page 13 for info.



HOLOGRAPHIC HYBRID SIGHT

HHS II™

EXPS2-2 with a G33 Magnifier

Regardless of the scenario, the Holographic Hybrid Sight II (HHS II), featuring an EXPS2-2 with a G33 magnifier, provides an unparalleled advantage when transitioning from short- to long-range shooting. Instant transition is achieved through a quick Switch-To-Side (STS) mount that offers a simple, quick disengagement of the magnifier.



See page 13 for info.



magnifiers



MODEL G33™

Known as the magnifier of choice for America's Elite Special Operation Forces, the G33 magnifier is shorter and lighter than the previous models. The mount provides faster transitioning from 3X to 1X, tool-free azimuth adjustment, larger field-of-view and an adjustable diopter for improved, precise focusing.

Available in Tan.

The HWS Model G33, HHS I and HHS II are controlled under the Export Administration Regulations (EAR) and may not be exported without proper authorization by the U.S. Department of Commerce.

| Product | Order Code | L x W x H | Weight | Waterproof | Color/Finish | Mount | Return to Zero | Brightness | Power Source | Battery Life | Reticle Options |
|---------|------------|--|--------------------|------------------|--------------|--------------------------------|---|---|-------------------------|-----------------|-------------------------------|
| HHS I | HHS I | 7.6" x 2.2" x 2.8" (193 x 55 x 71 mm) | 21.7 oz (616 g) | to 33 ft. (10 m) | black | 1" Weaver or MIL-STD-1913 rail | Repeatable to within 1 MOA after remounting | 30 brightness settings (10 NV settings) | 1 x 123 lithium battery | Approx. 600 hrs | 65 MOA ring w/ (4) 1 MOA dots |
| HHS II | HHS II | 7.6" x 2.2" x 2.8" (193 x 55 x 71 mm) | 21.7 oz (616 g) | to 10 ft. (3 m) | black | 1" Weaver or MIL-STD-1913 rail | Repeatable to within 1 MOA after remounting | 20 settings | 1 x 123 lithium battery | Approx. 600 hrs | 65 MOA ring w/ (2) 1 MOA dots |

| Product | Order Code | L x W x H | Weight | Waterproof | Color/Finish | Mount | Magnification Fixed | Eye Relief | Field-of-View | Sealing | Temperature |
|---------|------------------------|---------------------------------------|-----------------|------------------|--------------|--------------------------------|---------------------|-------------------|---------------|---------------------------|----------------|
| G33 | G33.STS or G33.STS tan | 3.9" x 2.8" x 3" (99 x 71 x 76 mm) | 10.6 oz (300 g) | to 33 ft. (10 m) | black, tan | 1" Weaver or MIL-STD-1913 rail | 3X | 2.2 in. (55.8 mm) | 7.3° | Fog-proof internal optics | -40° to 140° F |

MRDS

Built to rugged military specs, and used by USSOCOM, the MRDS was designed to aid rapid target acquisition at close combat distances. Its small footprint, low-power consumption, and auto/manual dot intensity adjustment with four brightness levels provide high visibility in all lighting conditions. It also features ease of operation over its competitors with capabilities such as a top-loading battery compartment that allows change-out without the need for sight removal or loss of zero. The positive click adjusters provide 1 MOA per click windage and elevation correction, ensuring quick and accurate sight alignment without the guesswork.

The MRDS supports a variety of mounting options:

- Projected 3.5 MOA red aiming dot
- 1 MOA per click windage and elevation adjustment
- Auto-adjust dot intensity
- Manual dot intensity with four brightness levels
- Waterproof to 66 ft. (20 m)
- Meets MIL-STD requirements
- Top-load battery with up to one year runtime
- Fits other mini-sight mounts

MRDS ORDER CODES:

- MRD-000-A1 - Black 3.5 MOA Dot
- MRD-000-A2 - Tan 3.5 MOA Dot
- MRD-000-A11 - Black 3.5 MOA Dot with Mount
- MRD-000-A12 - Tan 3.5 MOA Dot with Mount



SHOTGUN MOUNT

for the MRDS

The shotgun mount for the Mini Red Dot Sight is specifically designed around the receiver of Remington® 870, 1100 and 11-87 12-gauge models. It features a saddle design that places the dot of the MRDS very close to the bore, making for easier instinctive shooting. No gunsmithing needed.

MOUNT ORDER CODE

- 9-MRDS-SGM-REM - Remington® Shotgun Mount for MRDS



This MRDS is subject to the Export Administration Regulations (15 CFR 730-744). ECCN Number 0A987, U.S. Department of Commerce authorization may be required to transfer this commodity to foreign persons.

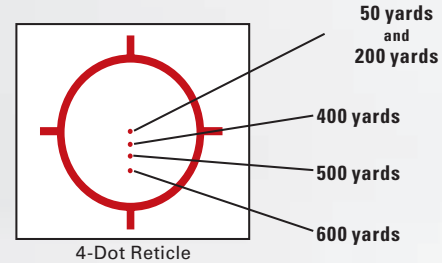
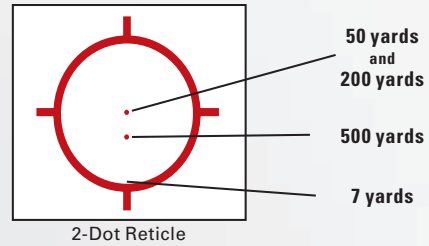
| Product | Order Code | L x W x H | Weight | Waterproof | Color/ Finish | Aiming Dot Size | Range of Travel | Power Source | Battery Life |
|---------|------------|---|---------------------------------------|---------------|---------------|-----------------|-----------------|------------------|---|
| MRDS | see above | 1.9" x 1.1" x 1.2" (48.2 x 27.9 x 30.4 mm) | 0.85 oz (24 g) (including battery) | 66 ft. (20 m) | black, tan | single 3.5 MOA | +/- 60 MOA | 1 x 1632 battery | Photodiode Mode – Up to 1 yr (varies w/lighting conditions) High 1 (1.6 mA) – 36 hrs High 2 (.433 mA) – 250 hrs Low 1 (.04 mA) – 3250+ hrs |

HWS RETICLE ADVANTAGES

EOTECH RETICLES

Exclusive to EOTech, holographic technology offers enormous advantages over red dot sights. Where red dots only provide a single aiming dot, EOTech reticles offer multiple trajectory point of aim/point of impact, range assist scales, and anti-torque or cant visual indicators.

EOTech offers a 2-dot reticle in the XPS and EXPS models that is easily distinguishable with or without magnification. This reticle design is calibrated to the specific trajectory of the M4 carbine, but is compatible on other weapon platforms. These two dots provide four usable aiming points (see example to right).



The A65 ring found on most reticles equates to approximately 65" (5'5") at 100 yards

| LOAD | CENTER DOT FIRST ZERO | CENTER DOT SECOND ZERO | SECOND DOT ZERO | BOTTOM OF CIRCLE |
|--|-----------------------|------------------------|-----------------|------------------|
| .223 Cal. 62 Gr., 2,900 Vel. | 50 yds | 200 yds | 500 yds | 7 yds |
| .44 Mag. 240 Gr., 1,300 Vel. | 25 yds | 50 yds | 165 yds | — |
| 12 gauge 385 Gr., 1,850 Vel. | 25 yds | 100 yds | 250 yds | — |
| .50 Cal. Black Powder 350 Gr., 1,850 Vel. | 25 yds | 100 yds | 250 yds | — |

OTHER BALLISTIC RETICLES

| | | | |
|---|--|--------------------------------------|----------------------------------|
| | | | |
| 4 | XR308 | FN303 | SAGE |
| 223 cal with 62 gr M855 FMJ at roughly 2,680 fps using a 14.5" barrel | .308 cal with 150 gr M59 FMJ at roughly 2,800 fps using a 24.8" barrel | Less Lethal Launcher (.68 cal) | Less Lethal Launcher 37 mm |

| MODEL | BATTERY TYPE | | FEATURES | | | | | | | WATERPROOF | | MOUNTING | | | RETICLE OPTIONS | | | | | | | | | | Catalog Page # | | |
|---------------|--------------|------------------------|----------------|-------------------------|---------------|-----------------------|------------------------|------------------|------------------|------------|--------|----------|-------------------|---------------|----------------------|-----------------------|------------------|------------------------------|--------------------|------------------------------|-----------------------------|------------------------------------|----------------------------------|------------------|----------------|------------------|----|
| | Lithium 123 | AA Alkaline or Lithium | # of Batteries | Night Vision-Compatible | Auto Shutdown | Low-Battery Indicator | Slide-Button Operation | 7 mm Raised Base | Cam/leveler Base | 10 ft. | 33 ft. | 66 ft. | Single Cross Bolt | 3/8" Dovetail | Quick-Release Levers | 65 MOA Ring 1 MOA Dot | Single 1 MOA Dot | 65 MOA Ring & (2) 1 MOA Dots | Ballistic Dots (4) | .223 Cal. Ballistic Dots (4) | .308 Cal. Ballistic Reticle | Sage Less Lethal Ballistic Reticle | FM Less Lethal Ballistic Reticle | Binarand Reticle | | Crossbow Reticle | |
| EOTech | | | | | | | | | | | | | | | | | | | | | | | | | | | |
| EXPS3-0 | • | | 1 | • | • | • | • | • | | | | | | | • | | | | | | | | | | | | 4 |
| EXPS3-2 | • | | 1 | • | • | • | • | • | | | | | | | • | | | | | | | | | | | | 4 |
| EXPS3-4 | • | | 1 | • | • | • | • | • | | | | | | | • | | | | | | | | | | | | 4 |
| 553.A65BLK* | • | | 2 | • | • | • | • | • | | | | | | | • | | | | | | | | | | | | 5 |
| 553.A65TAN* | • | | 2 | • | • | • | • | • | | | | | | | • | | | | | | | | | | | | 5 |
| 556.A65/1* | • | | 2 | • | • | • | • | • | • | | | | | | • | | | | | | | | | | | | 5 |
| XPS3-0 | • | | 1 | • | • | • | • | • | | | | | | | • | | | | | | | | | | | | 6 |
| XPS3-2 | • | | 1 | • | • | • | • | • | | | | | | | • | | | | | | | | | | | | 6 |
| 552.A65/1 | | • | 2 | • | • | • | • | • | | | | | | | • | | | | | | | | | | | | 6 |
| 552.XR308 | | • | 2 | • | • | • | • | • | | | | | | | • | | | | | | | | | | | | 6 |
| 552.LBC2 | | • | 2 | • | • | • | • | • | | | | | | | • | | | | | | | | | | | | 6 |
| HHS I | • | | 1 | • | • | • | • | • | | | | | | | • | | | | | | | | | | | | 11 |
| EXPS2-0 | • | | 1 | • | • | • | • | • | | | | | | | • | | | | | | | | | | | | 7 |
| EXPS2-2 | • | | 1 | • | • | • | • | • | | | | | | | • | | | | | | | | | | | | 7 |
| XPS2-0 | • | | 1 | • | • | • | • | • | | | | | | | • | | | | | | | | | | | | 7 |
| XPS2-1 | • | | 1 | • | • | • | • | • | | | | | | | • | | | | | | | | | | | | 7 |
| XPS2-2 | • | | 1 | • | • | • | • | • | | | | | | | • | | | | | | | | | | | | 7 |
| XPS2-FN | • | | 1 | • | • | • | • | • | | | | | | | • | | | | | | | | | | | | 7 |
| XPS2-SAGE | • | | 1 | • | • | • | • | • | | | | | | | • | | | | | | | | | | | | 7 |
| XPS2-RF | • | | 1 | • | • | • | • | • | | | | | | • | | | | | | | | | | | | | 10 |
| 300 BLK | • | | 1 | • | • | • | • | • | | | | | | | • | | | | | | | | | | | | 7 |
| 516.A65/1* | • | | 2 | • | • | • | • | • | | | | | | | • | | | | | | | | | | | | 8 |
| 517.A65/1* | | • | 2 | • | • | • | • | • | | | | | | | • | | | | | | | | | | | | 8 |
| 512.A65/1 | | • | 2 | • | • | • | • | • | | | | | | | • | | | | | | | | | | | | 9 |
| 512.MOSSYOAK | | • | 2 | • | • | • | • | • | | | | | | | • | | | | | | | | | | | | 9 |
| 512.Realtree | | • | 2 | • | • | • | • | • | | | | | | | • | | | | | | | | | | | | 9 |
| 512.LBC | | • | 2 | • | • | • | • | • | | | | | | | • | | | | | | | | | | | | 9 |
| 512.XBOW | | • | 2 | • | • | • | • | • | | | | | | | • | | | | | | | | | | | | 9 |
| Zombie I | • | | 1 | • | • | • | • | • | | | | | | | • | | | | | | | | | | | | 10 |
| Zombie II | • | | 1 | • | • | • | • | • | | | | | | | • | | | | | | | | | | | | 10 |
| HHS II | • | | 1 | • | • | • | • | • | | | | | | | • | | | | | | | | | | | | 11 |

*These models are controlled under the International Traffic in Arms Regulations (ITAR) USML Category I(f) and may not be exported to a Foreign Person, either in the U.S. or abroad, without a license or exception from the U.S. Department of State.

IFL

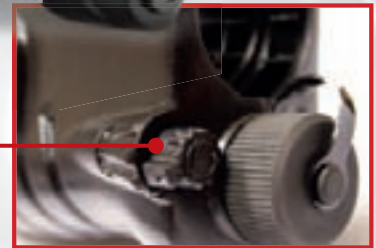
Integrated Fore-End Light 250 Lumens for Shotguns

The Integrated Fore-End Light (IFL) is the first to offer a truly integrated LED light. The IFL offers 250 lumens of light with a 10-lumen dim mode and ambidextrous pressure pads for quick engagements. Durable and dependable, the IFL will **transform your arsenal.**

- 250 lumens
- Ambidextrous pressure pads
- Hard off/on switch
- Constant on, momentary and strobe options
- Custom grip
- Models available for Mossberg® 500/590 & Remington® 870 in 12-gauge
- No gunsmithing required



Available in both
**Remington
870
&
Mossberg
500
versions**



Rotary Switch

tactical lights



Multi-Function Switch

- Hold - momentary
- Double tap & release - on
- Double tap & hold - strobe



Mount Characteristics

The IFL attaches securely to the following shotgun platform:

- Any 12-gauge Mossberg® 500 with 7 3/4" slide action tube assembly
- 12-gauge Mossberg® 590 – with 7 3/4" slide action
- 12-gauge Mossberg® 590A1 – with 7 3/4" slide action
- Fits all Remington® 870 - 12-gauge

DOES NOT FIT:

- 12-gauge Mossberg® 500 with fixed slide action bars
- 12-gauge Mossberg® 500/590/590A1 with Tri-Rail
- 12-gauge Mossberg® Maverick pump action
- 12-gauge Mossberg® 514-590 with 14" barrel

The IFL is controlled under the Export Administration Regulations (EAR) ECCN 0A987, and may not be exported to a Foreign Person, either in the U.S. or abroad, without a license or exception from the U.S. Department of Commerce.

| Product | Order Code | L x W x H | Weight | Output | Min Runtime | Strobe | Auto Off | Waterproof | Battery Power | Momentary | Laser |
|--------------|--------------|--|-----------------|---------------------------------------|-------------|--------|----------|-------------------------------|-------------------------|-----------|-------|
| IFL-MOSS 250 | IFL-MOSS-250 | 8.83" x 2.22" x 3" (224.2 x 56.3 x 76.2 mm) | 11 oz (311.8 g) | 10 lumens (low), 250 lumens (high) | 120 min. | Yes | No | to 3 ft. (1 m) for 30 min. | (2) 123 lithium battery | Yes | No |
| IFL-REM 250 | IFL-REM-250 | 8.83" x 2.22" x 3" (224.2 x 56.3 x 76.2 mm) | 11 oz (311.8 g) | 10 lumens (low), 250 lumens (high) | 120 min. | Yes | No | to 3 ft. (1 m) for 30 min. | (2) 123 lithium battery | Yes | No |

ATPIAL (AN/PEQ-15)

Advanced Target Pointer/Illuminator/Aiming Laser*

Based on the design of USSOCOM, U.S. Army and U.S. Marines, the Low-Power Advanced Target Pointer/Illuminator/Aiming Laser (ATPIAL) is a small, lightweight, easy-to-use aiming system with integrated visible aiming laser.

- Co-aligned visible laser
- Hardened for use on small arms and crew-served weapons
- Low-Powered Laser suitable for civilian use
- Ideal for LE training exercises



Lasers



| Product | Order Code | L x W x H | Weight | Power Source | Battery Life | Visible Aim Laser | IR Aiming Laser | IR Illuminator |
|------------------|----------------------|--|---------------------------------|-----------------|----------------------|--|-----------------|----------------|
| Low-Power ATPIAL | ATP-000-A18VIS (tan) | 4.6" x 2.8" x 1.6" (116.8 x 71.1 x 40.6 mm) | 7.5 oz (212.6 g) w/batteries | 1 x 123 battery | > 6 hrs in Dual High | Output: $\leq 5\text{ mW}$ Max (Class IIIa) Wavelength: 650 nm | N/A | N/A |



Darkness and Extreme Conditions - Gain The Advantage.

EOTech is a leader in electro-optical technologies. With over 40 years of experience, we offer the most advanced and reliable night vision (I²) and thermal (IR) products on the market. Thermal and night vision equipment have improved greatly over the years. Understanding these advancements is important when deciding between thermal or night vision products.

Thermal vs. Night Vision

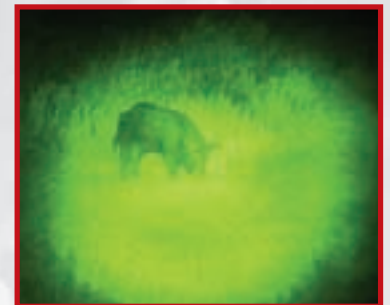
Thermal Imaging Attributes:

- Detects heat signatures by interpreting infrared (IR) light waves of target area
- Usable in any light condition (day or night)
- Provides visibility through extreme environments (fog, smoke & dense foliage)
- Can detect targets out to extreme distances
- Superior image detection, but image identification is challenging
 - difficult to determine friend or foe



Night Vision Attributes:

- Exceptional image identification, especially at close range
- Doesn't function in bright ambient conditions
- Will not function in pitch darkness. Needs a small amount of light to operate.



WTM

Weapon-Mounted Mini-Thermal Monocular*

The weapon-mounted Mini-Thermal Monocular features a Picatinny rail interface and is hardened to withstand the sustained recoil of 5.56 mm tactical loads while still delivering unparalleled thermal imaging capability. It can be mounted to a .223 platform or used as a stand-alone thermal optic. The monocular features image capture and video out for download to a personal computer with 320 x 240 resolution.



FRONT VIEW



BACK VIEW



TOP VIEW



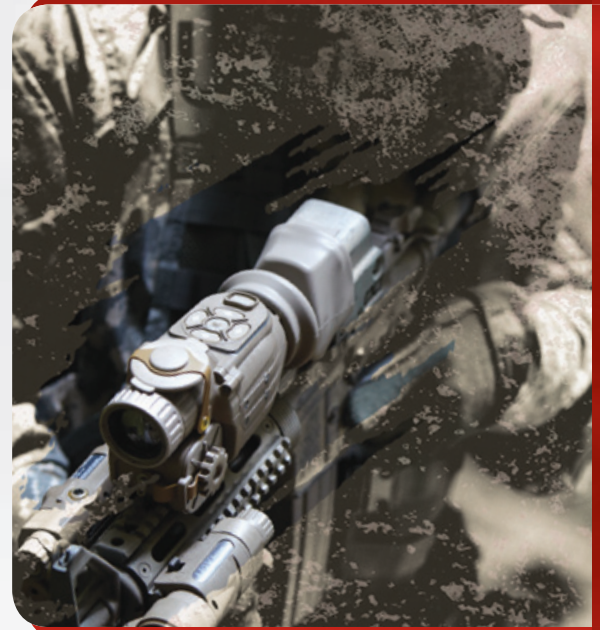
*This product is controlled by export. Please see back cover for more information. Approved for public release DoD Ref: 08-S-1073.

| Product | Order Code | L x W x H | Weight | Power Source | Battery Life | Waterproof | Operational Temperature | Target Detection | Features |
|---------|---------------------------------|--|----------------------------------|-------------------------|--------------|------------------|--|------------------|---|
| WTM | WTM-000-A14 (WTM-Visible Laser) | 6.5" x 2.2" x 2.8" (165.1 x 55.8 x 71.1 mm) | 11.8 oz (334.5 g) w/batteries | 2 x 123 lithium battery | 4 hrs | to 66 ft. (20 m) | -34 ° C to +50 ° C Sensitivity to .07 ° Temperature Differences | up to 600 m | <ul style="list-style-type: none"> • Integrated Visible Laser • White Hot or Black Hot • Low-Battery Indicator • Weapon Mountable |
| MTM | MTM-000-A10 (No Laser) | 6.5" x 2.2" x 2.8" (165.1 x 55.8 x 71.1 mm) | 11.8 oz (334.5 g) w/batteries | 2 x 123 lithium battery | 4 hrs | to 66 ft. (20 m) | -34 ° C to +50 ° C Sensitivity to .07 ° Temperature Differences | up to 600 m | <ul style="list-style-type: none"> • White Hot or Black Hot • Low-Battery Indicator • Handheld Only |

LWTS

Light Weapon Thermal Sight

The Light Weapon Thermal Sight (LWTS) is a handheld and clip-on weapon-mounted thermal weapon sight with 320 x 240 resolution. The thermal imaging capability of the LWTS allows for long-wave infrared observation and target identification under adverse conditions, including, light rain, smoke, light snow and low light to total darkness.



*This product is controlled by export. Please see back cover for more information. Approved for public release DoD Ref: 08-S-1073.

| Product | Order Code | L x W x H | Weight | Power Source | Battery Life | Field-of-View | Magnification | Focus Range | Frame Rate | Recognition After Detection |
|---------|------------|--|-----------------------------------|------------------------|-----------------------------|-------------------|-------------------------|-----------------|------------|-----------------------------|
| LWTS | TWB-001-A3 | 6.7" x 3.6" x 3.9" (170.1 x 91.4 x 99 mm) | 1.85 lb. (839.2 g) w/batteries | 4 x AA lithium battery | 10 hrs @ 77 ° F (25 ° C) | 14.8 ° Horizontal | 1X with 2X digital zoom | 3 m to infinity | 30 Hz | >1400 m clear air |



NEW FOR 2014
X320™ THERMAL IMAGER

New for 2014, the X320 Thermal Imager delivers advanced thermal imaging technology in a compact, rugged design. The X320 Thermal Imager provides an impressive 320 x 240 resolution with a 30 Hz refresh rate and is waterproof and shockproof up to 1 m. Its ability to detect activity from more than 800 yards makes it perfect for public safety, first responders, security operations and hunting where local laws allow.

BENEFITS

- Simple one-button operation
- Greater scene detail with VGA 320 x 240 resolution
- Video port for simultaneous recording
- Covert operation with fully dimmable microdisplay
- Stows easily into pocket for quick extraction and agile operation in the field and on the run
- Customize camera features with provided user interface software

FEATURES

- 30 Hz frame rate
- 9 Hz model available
- Detect human activity up to 800 yards away
- 2x, 3x or 4x zoom
- White hot, black hot and 3 color modes
- Temperature measurement & cross hair enabled via supplied software CD
- Survives accidental drops and submersion
- Pocket-sized, weighing only 13 ounces (381 grams)
- Up to 6 hours runtime with two user-replaceable AA lithium batteries*
- Rugged design with integral rubber eye cup - 3-Year Warranty
- Tripod mount (1/4 - 20 thread)



- COVERT SURVEILLANCE
- CRIME SCENE INVESTIGATION
- SEARCH & RESCUE
- MECHANICAL INSPECTION
- ELECTRICAL INSPECTION

- FUGITIVE PURSUIT
- OUTDOOR RECREATION
- HUNTING
- FARMING / RANCHING

*The X320 Thermal Imager can run AA alkaline batteries, but performance and battery life may be inconsistent.

X320 TECHNICAL SPECIFICATIONS

| FEATURES | | X320 |
|-------------------------------|--|---|
| FOCAL PLANE ARRAY | MATERIAL & STRUCTURE | Amorphous Silicon Microbolometer |
| | PIXEL COUNT (RESOLUTION) | 320 x 240 |
| | SPECTRAL RESPONSE | 7 to 14 μ m (filter bandwidth) |
| | THERMAL SENSITIVITY | \leq 40 mK |
| THERMAL IMAGING PERFORMANCE | START-UP TIME | 5 seconds (includes 2-second display of start-up logo) |
| | BRIGHTNESS/CONTRAST | Fully automatic |
| | RANGE TO DETECT HUMAN ACTIVITY | Up to 800 yards |
| | E-ZOOM | 2X, 3X or 4X e-zoom as default on power push button |
| | INFRARED POLARITY | White hot, black hot, detection palettes and custom color modes |
| OPTICS | FOV (H x V) | 12° x 9° |
| | FOCAL LENGTH (MM) | 25 mm |
| | MINIMUM FOCUS DISTANCE | 3 ft. (1 m) |
| VIDEO | OUTPUT FORMAT | Simultaneous NTSC output available on rear outlet jack |
| | VIEWFINDER DISPLAY | Color LCD (320 x 240 pixels) |
| | VIEWFINDER DIMMING | Integral to power on/off switch |
| POWER | POWER SOURCE | 2 AA batteries (lithium recommended) |
| | OPERATING TIME | 6 hours with lithium |
| | AUXILIARY POWER | 12 VDC input on rear outlet jack |
| ENVIRONMENTAL CHARACTERISTICS | OPERATING TEMPERATURE | -4 °F to 140 °F (-20 °C to 60 °C) |
| | STORAGE TEMPERATURE | -4 °F to 176 °F (-20 °C to 80 °C) |
| | WATER & SHOCK RESISTANCE | Waterproof to 3 ft. (1 m) submersion, buoyant. Shockproof (MIL-STD-810G, Method 516.6). |
| | EMC COMPLIANCE | FCC Part 15 & CE Mark |
| PHYSICAL CHARACTERISTICS | SIZE | 5 1/4" L x 4 1/2" W x 2" H (13.4 x 11.4 x 5.1 cm) |
| | WEIGHT | 13 oz (381 g), batteries installed |
| | EYE CUP | Integral to camera body |
| ORDERING INFORMATION | CAMERA PART NUMBERS | 30 Hz Camera - NTSC: 5002021-1 9 Hz Camera - NTSC: 5002020-1 |
| CAMERA FEATURES | <ul style="list-style-type: none"> - White hot, black hot, detection palettes and custom color modes - On-screen battery level indicator - Left- or right-hand operation with rugged slip-resistant grip - 1/4 - 20 tripod mount | <ul style="list-style-type: none"> - Tactile battery loading feature for stealth nighttime operation - External power input and video output jacks - Long eye-relief viewfinder for use with glasses, face shields, masks, etc. - Push-button control to activate feature set |
| STANDARD EQUIPMENT | <ul style="list-style-type: none"> - 2 AA lithium batteries - Neck strap & wrist strap | <ul style="list-style-type: none"> - Lens cover - Lens cleaning cloth - USB cable - Interface software CD |
| OPTIONAL EQUIPMENT | <ul style="list-style-type: none"> - MOLLE-Compatible soft pouch - 5002070 - DVR cable 5002024 | <ul style="list-style-type: none"> - BNC video cable - 5002068 - A/C power adapter - 5002067 |

Specifications subject to change without notice.



*The X320 Thermal Imager can run AA alkaline batteries, but performance and battery life may be inconsistent.



MODEL M914™

The M914 weapon sight is one of the most versatile night vision systems available today. It can be used as a handheld pocket scope, a helmet-mounted monocular, or a weapon sight when mounted in tandem with an infrared laser aimer or other night vision-compatible primary optic such as an EOTech HWS. Additional features include a low-battery indicator located in the eyepiece and an active projected infrared LED that provides short-range illumination for activities such as map reading.



MODEL M2124™

The M2124 is a rugged, Clip-On Night Vision Device (CNVD) based upon the military AN/PVS-24 nomenclature used by U.S. Special Operations Forces. The advanced design of the M2124 eliminates the typical requirement of removing a primary (day) sighting system since the CNVD mounts in line with a standard day optical sight. Combining day and night vision sights eliminates the need to re-zero, since the primary sight remains undisturbed. Additional advantages to supplementing a primary sighting system with the M2124 include maintaining a user's consistent eye relief and shooting position, as well as retaining user muscle memory. By operating the locking quick-disconnect, single-throw lever-mounting system provided, the M2124 easily attaches to a MIL-STD-1913 rail interface system. The unit can also be used as a handheld observation device. Offered in two versions, the M2124LR is optimized to partner with high-powered magnified scopes.



M2124LR Version



| Product | Order Code | L x W x H | Weight | Mount | Magnification | Field-of-View | Objective Lens | Min Focus Distance | Eye Relief | Diopter Adjustment | Gen III Image Intensification Tube Option | Power Source | Battery Life |
|---------|----------------------------|--|--------------------|---|---------------|---------------|--------------------|-----------------------|------------------|--------------------|---|----------------|------------------------------|
| M914 | M914A/PVS-14 245620-005 | 4.5" x 2" x 2.2" (114.3 x 50.8 x 55.8 mm) | 10.2 oz (290 g) | Head and helmet mount adapters and weapon mount adapter for MIL-STD-1913 rail | 1X | 40° | 1.1 in. (27 mm) | 9.8 in. (248.9 mm) | 1 in. (25 mm) | +2 to -6 | Omega FOM 1344 | 1 x AA battery | ~ 40 hrs at room temperature |

| Product | Order Code | LxW | Weight | Mount | Magnification | Field-of-View | Objective Lens | Min Focus Distance | Detection Range | Diopter Adjustment | Gen III Image Intensification Tube Option | Power Source | Battery Life |
|---------|---------------------------|--------------------------|--------------------|--------------------------------------|---------------|---------------|--------------------|-----------------------|--------------------|--------------------|---|-------------------------|-----------------------|
| M2124 | M2124 (PVS-24 type) | Call factory for details | 27.2 oz (771 g) | MIL-STD-1913 rail | 1X | 40° | 2.2 in (55 mm) | 9.8 in. (248.9 mm) | 328 yd. (300 m) | N/A | Omega | 1 x 123 lithium battery | ~ 16 hrs @ room temp. |
| M2124LR | M2124-LR (PVS-24 type) | Call factory for details | 36 oz (1020 g) | Quick-Disconnect, Single Throw Lever | 1X | 8° | 4.3 in (110 mm) | 9.8 in. (248.9 mm) | 1574 yd. (40 m) | N/A | Omega | 1 x 123 or AA battery | ~ 16 hrs @ room temp. |



EOTech Disclaimers

Clearance Notice- SU-231/PEQ cleared for public release by Maj. Ken Hoffman, USAF; USSOCOM Public Affairs on July 6, 2006.
ReaITree APD HD© 2006 of Jordan Outdoor Enterprises, Ltd., all rights reserved

Export of the commodities described herein is strictly prohibited without a valid export license issued by the U.S. Department of State, Office of Defense Trade Controls, prescribed in the International Traffic in Arms Regulation (ITAR), Title 22, Code of Federal Regulations, Parts 120 - 130.

Cleared by DOD/OSR for Public Release Under Ref: 09-S-0794 on February 23, 2009.

All above information is applicable to all products shown.

Insight Disclaimers

Export Notice- Insight Technology products are controlled for export purposes under the International Traffic in Arms Regulations (22 C.F.R. Chapter 1, Subchapter M, Parts 120-130) and the Export Administration Regulations (15 C.F.R., Parts 730-744), and require U.S. Government authorization prior to the export or transfer to a non-U. S. Person. Contact Insight Technology for details.

This catalog consists of L-3 Communications Corporation general capabilities information that does not contain controlled technical data as defined within the International Traffic in Arms (ITAR) Part 120.10 or Export Administration Regulations (EAR) Part 734.7-11.

Trademark- "Insight", the Eye logo, the Stylized "X", "Slide-Lock", are Registered Trademarks. "X2", "X2L", "Rail- Grabber" are Trademarks of Insight Technology Incorporated

Patents- One or more of these products may be covered by one or more of the following U.S. Patents: 5,374,986; 5,400,540; 5,430,967; 6,185,854; 6,190,025; 6,574,901; 7,493,722; D522,031; D568,508 and D595,439. © 2010 Insight Technology Incorporated

Use of U.S. DoD imagery in this catalog does not imply or constitute DoD endorsement

Visit www.eotech-inc.com

transform your arsenal.

1201 E. Ellsworth Road, Ann Arbor, MI 48108 888.EOTHOLO www.eotech-inc.com

Where to Buy:

U.S. Distributor List: <http://www.eotech-inc.com/merchantlist.php>

For U.S. military inquiries call 866-509-2044

All specifications are subject to change.

© 2014 Master Catalog V.1

